

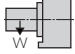

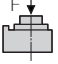
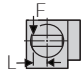
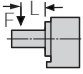
RBS-160, 250, 320

ZERO MAINTENANCE • HIGH TORQUE TRANSFER EFFICIENCY

KOMAPrecision, Inc. introduces a new line of high accuracy, high rigidity, energy saving and zero maintenance rotary tables from Tsudakoma. The RBS Series rotary tables are built using the new ball drive system featuring advantages like zero backlash, improved cycle times, energy conservation and a lifetime adjustment-free transmission system.



RBS-160

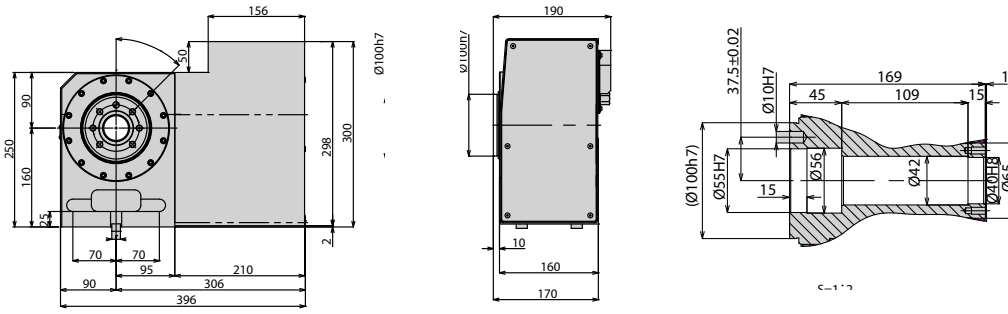
Table Model		RBS-160	RBS-250	RBS-320	
Versions available		R, L	R, L	R, L	
Table diameter	mm	(160, 200)	250	320	
Center height	mm	160	210	255	
Center bore	Nose Diameter	mm	55H7	80H7	
	Thru Diameter	mm	40	50	
Table T-slot width		12H8	12H8	14H8	
Guide block width		14h7	18h7		
Servo motor (Fanuc)*		Alpha 4i	Alpha 8i	Alpha 12i	
Maximum motor speed	rpm	5,000	4,000	4,000	
Speed reduction ratio		1/36	1/36	1/36	
Maximum table speed	rpm	138.9	111.1	111.1	
Inertia converted into motor shaft	$\times 10^{-3}\text{kg}\cdot\text{m}^2$.19	.42	2.24	
Clamp system**		Pneumatic			
Clamp torque @72psi	Nm (ft. lbs.)	700 (516)	1,480 (1,076)	2,580 (1,901)	
Indexing accuracy		arc sec. ± 7.5			
Net Weight	kg (lbs.)	55 (121.2)	100 (220)	200 (440)	
Allowable work inertia		kg·m ²	0.64	1.95	4.48
Allowable work weight [w/ tailstock]		kg (lbs)	100 (220) [200 (441)]	125 (275) [250 (551)]	175 (385) [350 (771)]
		kg (lbs)	200 (441)	250 (551)	350 (771)
Allowable load when table clamped		N (lbf)	10,800 (7,965)	14,400 (10,620)	24,800 (18,291)
		Nm (ft. lbs.)	500 (368)	1,000 (737)	1,500 (1,106)
		Nm (ft. lbs.)	780 (575)	1,900 (1,401)	4,700 (3,466)

*Other motors & rpm available • Dimensions = mm
Specifications subject to change without notice

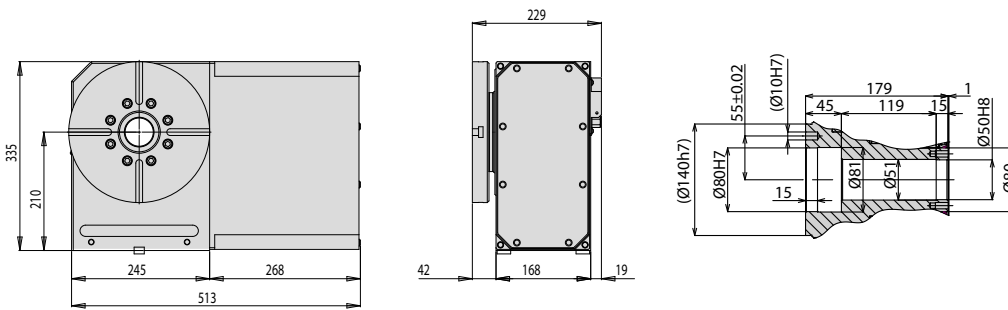
Dimensions

Drawings not to scale • Dimensions = mm

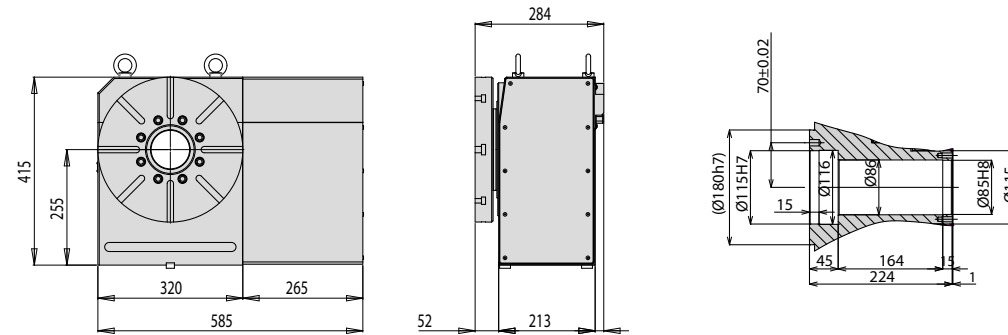
RBS-160



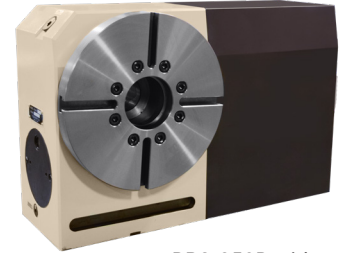
RBS-250



RBS-320



The dimensions above are for tables with a FANUC servo motor. Other motors available (dimensions may increase).



RBS-250R with optional faceplate



RBS-160R with 6" 3-Jaw Scroll Chuck

Clamping Block and Bolt

Dimensions = mm

Type	Q'ty	T-Slot Width	A	B	C	D	E	F	G	H	I	J	K	L	M	
RBS-160	-	2	14	-	-	-	-	-	-	17	8	60	-	23	12	
RBS-250	I	4	18	25	12	80	12	33	35	22	21	11	65	40	28	16
RBS-320	I	4	18	30	15	90	16	31	43	25	21	11	70	46	28	16

Options & Accessories

TPC NC Controller	p.62
Chucks	p.74
Tailstock	p.75
Support Spindle	p.77
Face Plate	p.77
Encoder / Scale	p.78
Pull Stud Device	p.79
Rotary Joint	p.79
Booster	p.80
PVC or Steel Cables	p.81